

BIG COUNTRY WASTE MANAGEMENT COMMISSION

Waste Management Services are comprised of the **collection** of waste materials from 28 transfer stations and **disposal** at the Youngstown Regional Landfill.

Formed in 1986, the Big Country Waste Management Commission (BCWMC) is responsible for **maintaining, controlling and managing the regional collection, transfer and disposal of waste.**

The BCWMC is comprised of municipalities whose mandate is to set policy direction.

Members include:

- Special Areas Board
- Town of Hanna
- Town of Oyen
- Village of Cereal
- Village of Consort
- Village of Empress
- Village of Veteran
- Village of Youngstown
- M.D. of Acadia No. 34

Each member municipality has an elected representative(s) whose term is 3 years.

The BCWMC executive is elected annually from the member representatives.

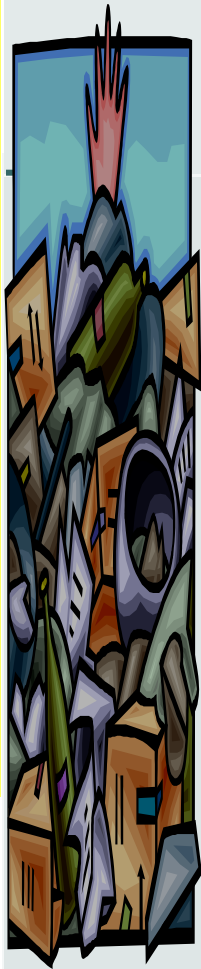
- Chairman
- Vice-Chairman
- Secretary-Treasurer
- Member-At-Large

The Director of Municipal Services, Special Areas Board currently acts as Operations Manager for BCWMC. All administrative support is supplied by the Special Areas Board.

The Operations Manager is responsible for coordinating and implementing financial and strategic policy objectives on behalf of the BCWMC.

The BCWMC currently employs 5 full-time and 2 part-time employees, as well as 19 contracted transfer station attendants.

The Landfill Manager is responsible for managing day-to-day operations of waste collection and disposal, transfer stations and attendants, and supervising all employees.



LANDFILL RATES

TYPE	FEE
Demolition	\$30.00/ton – local
	\$50.00/ton – non-local
Household Waste	No Charge
Industrial Waste	\$30.00/ton – local
	\$50.00/ton – non-local
Sulfur	\$30.00/ton – local
	Plus cat time and cost of lime \$50.00/ton – non-local
Asbestos	\$50.00/ton + 1 hr. minimum capping time
963-B Crawler Tractor	\$112.00/hour
Clean Burnable Wood	No Charge
	\$25.00/hour minimum for litter pick-up
Deep freezers, air conditioners, refrigerators	\$15.00 per unit freon removal charge (at transfer stations as well)

YOUNGSTOWN REGIONAL LANDFILL

The Youngstown Regional Landfill is located approximately 2 km southwest of the Town of Youngstown and has been accepting waste since 1986. The landfill currently accepts around 9000 tonnes per year of entirely domestic waste.

Environmental safeguards at the Youngstown Regional Landfill include:

- A clay liner that prevents leachate from contacting groundwater.
- A revegetation plan that involves the propagation and planting of native seedlings and grasses.

- ◆ Over 10,000 square miles and 10,000 people are currently serviced by BCWMC.
- ◆ In 2009, over 5,537 tonnes of waste material were collected from the 28 transfer stations.

- ◆ In 2009, over 8,816 tonnes was directly disposed of at the Youngstown Regional Landfill.
- ◆ In 2009, through recycling over 460 tonnes of material was diverted from landfill.

**QUICK
FACTS**

Waste Transfer Station Locations

RECYCLING



BIG COUNTRY WASTE MANAGEMENT COMMISSION

Waste Transfer Stations



Legend

- Waste Transfer Station
- Special Area No.4
- Special Area No.3
- Special Area No.2

Currently, all recycling services offered in the BCWMC area are operated by the Big Country Regional Recycling Society (BCRRS).

The primary site for recycling operations is located at the Hanna Waste Transfer Station. This site is managed by Lowther Enviro Services which is responsible for managing all recycling operations including collection, compaction, and marketing.

The BCWMC provides financial support to the recycling society in three ways:

1. An annual recycling grant of \$19,935.12
2. Diversion credits (\$50/tonne)
3. Majority portion of the operating and maintenance costs of the Hanna Waste Transfer Station.

In 2009, BCWMC invested over \$108,000 in Recycling.

These materials are currently accepted for recycling:

- Mixed Paper, Cardboard, Tin, Glass, and Electronics

Recycling Materials can be dropped off at:

- Consort, Oyen, Youngstown, Cereal, and Hanna

DRY WASTE SITES

Dry Waste collection locations include Hanna, Oyen, Consort, Empress, Veteran, Monitor, Cessford, Wardlow and the Youngstown Regional Landfill.

Items collected which are too large for regular pickup include unpainted wood, metal, large household appliances (white goods), tires, & concrete/rubble.

Waste Transfer Station Hours of Operation

Transfer Station	Days	Summer Hours	Hours	Transfer Station	Days	Summer Hours	Hours
Acadia Valley	Wednesday Sunday		9 am to 5 pm 10 am to 6 pm	Kirriemuir	Tuesday & Thursday Saturday		1 pm to 5 pm 8 am to 12 pm
Altario	Monday, Wednesday & Saturday		1 pm to 5 pm	Monitor	Monday, Wednesday & Saturday		1 pm to 5 pm
Cereal	Monday & Saturday Wednesday		1 pm to 5 pm 1 pm to 5 pm	Oyen	Tuesday & Saturday Thursday	9 am to 4 pm 1 pm to 8 pm	9 am to 4 pm 11 am to 6 pm
Cessford	Tuesday, Thursday & Saturday		1 pm to 5 pm	Richdale	Monday, Wednesday & Saturday		1 pm to 5 pm
Compeer	Tuesday & Thursday Saturday		1 pm to 5 pm 8 am to 12 pm	Scapa	Tuesday & Thursday Saturday		1 pm to 5 pm 10 am to 2 pm
Consort	Tuesday & Thursday Saturday		12 pm to 7 pm 8 am to 12 pm	Sibbald	Monday & Saturday Wednesday		1 pm to 5 pm 3 pm to 7 pm
Empress	Tuesday & Thursday Saturday		1 pm to 5 pm 10 am to 2 pm	Spondin	Monday, Wednesday & Saturday		1 pm to 5 pm
Esther	Monday, Wednesday & Saturday		1 pm to 5 pm	Sunnynook	Monday & Wednesday Saturday	3 pm to 7 pm 8 am to 12 pm	1 pm to 5 pm 8 am to 12 pm
Handhills	Tuesday & Thursday Saturday		1 pm to 5 pm 8 am to 12 pm	Veteran	Tuesday & Thursday Saturday		1 pm to 5 pm 8 am to 12 pm
Hanna	Tuesday to Saturday		9 am to 5 pm	Wardlow	Monday & Wednesday Saturday		1 pm to 5 pm 8 am to 12 pm
Hemaruika	Tuesday Thursday Saturday		1 pm to 5 pm 2 pm to 6 pm 8 am to 12 pm	Youngstown Regional Landfill	Monday to Thursday Friday 2 nd Saturday of the month	9 am to 6 pm 9 am to 5 pm	9 am to 5 pm 9 am to 5 pm 10 am to 4 pm
Homestead Coulee	Monday, Wednesday & Saturday		1 pm to 5 pm				
Jenner	Tuesday Thursday & Saturday		1 pm to 5 pm 10 am to 2 pm				